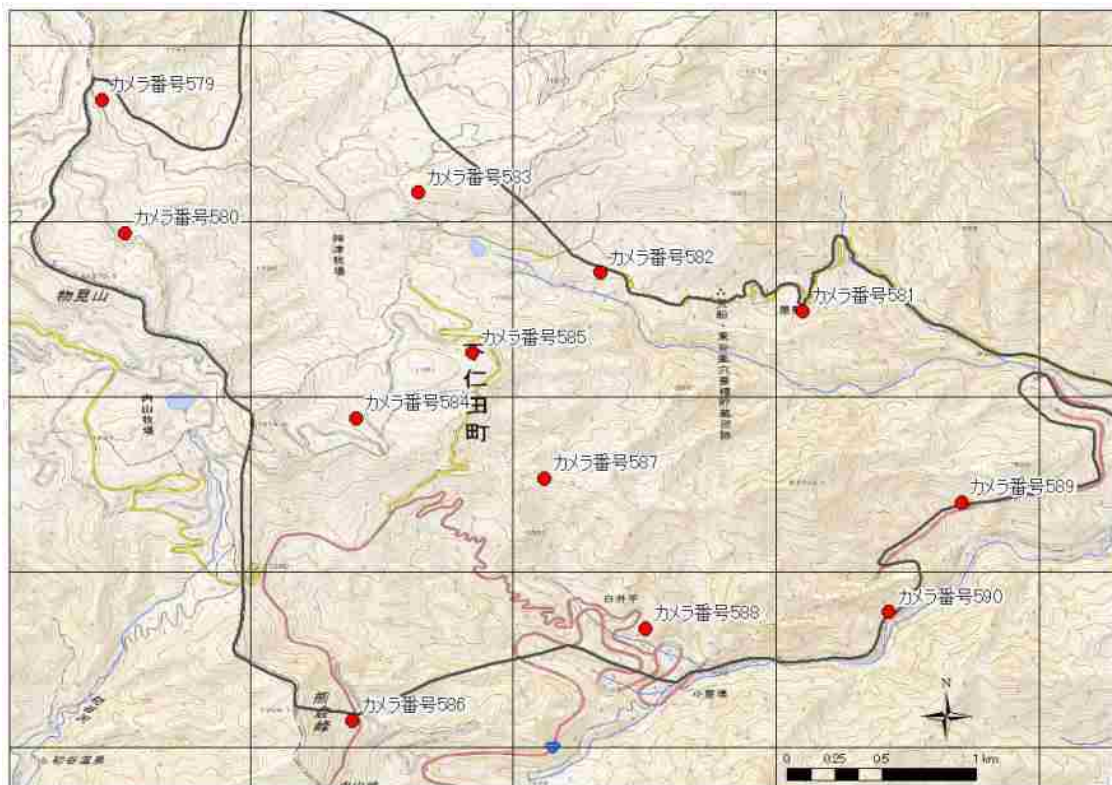
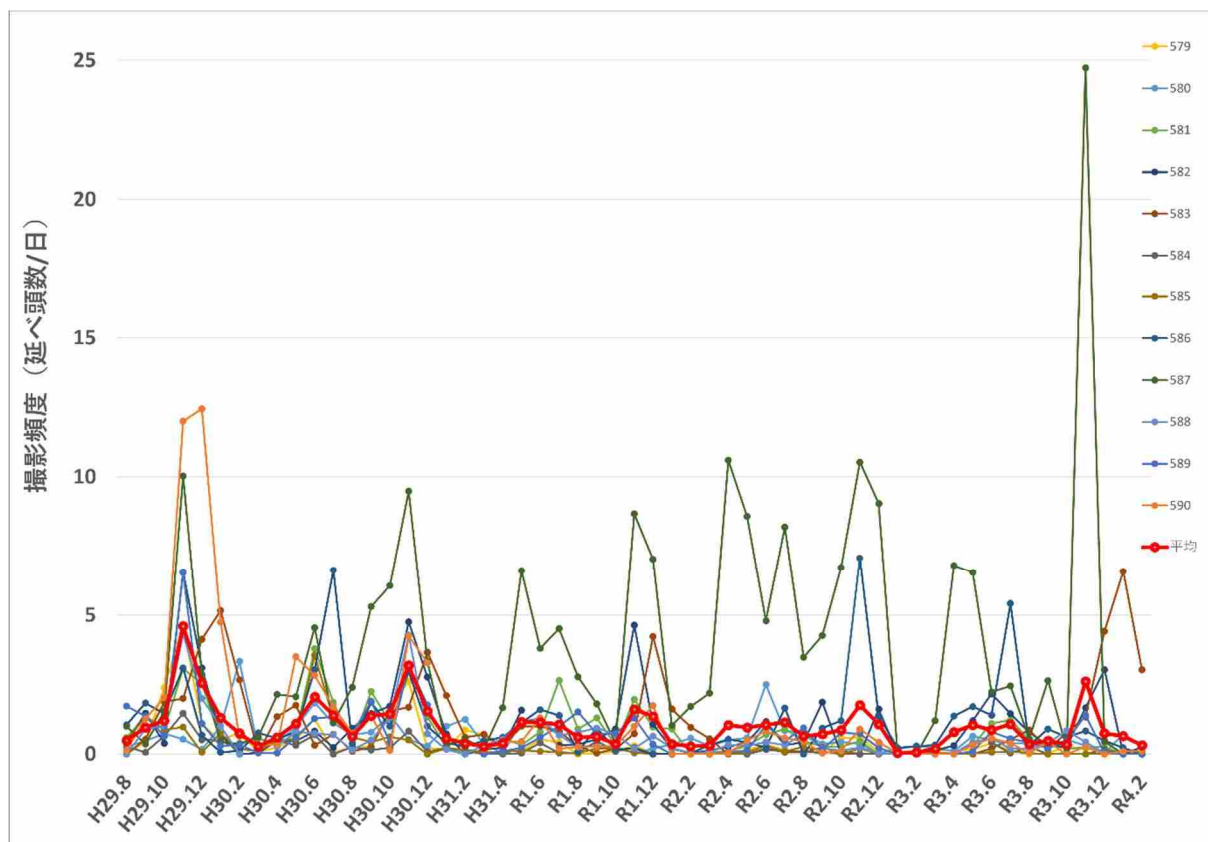


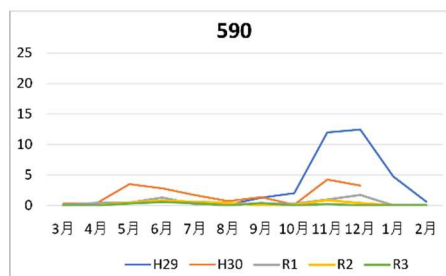
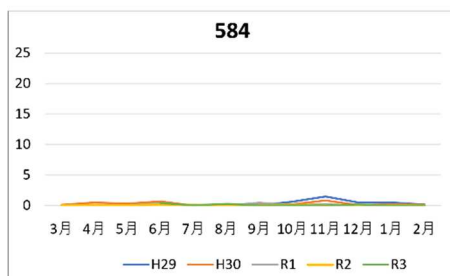
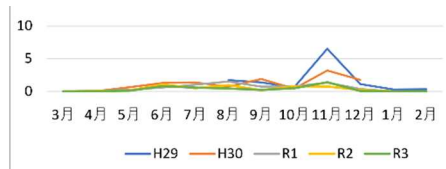
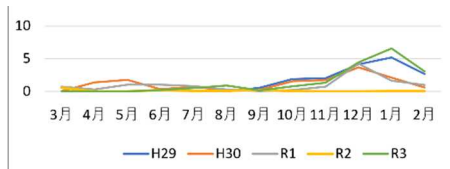
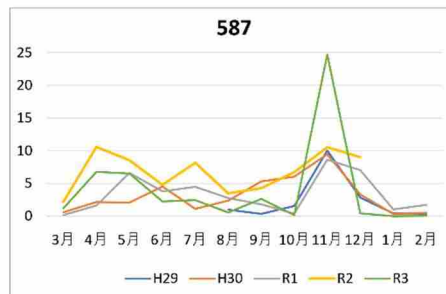
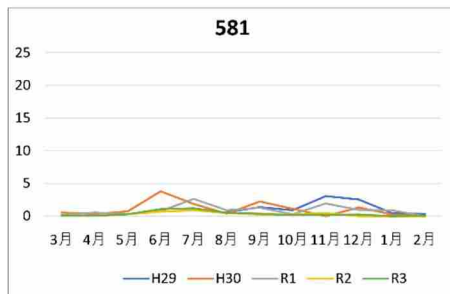
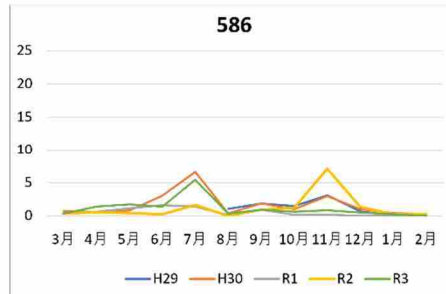
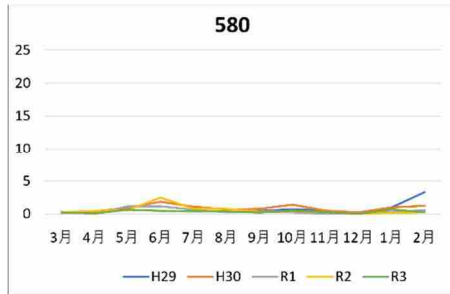
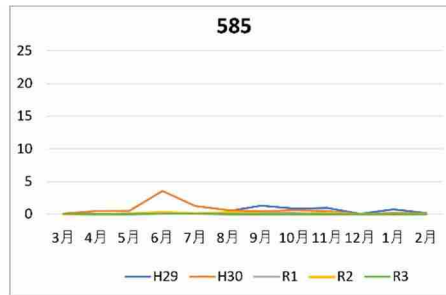
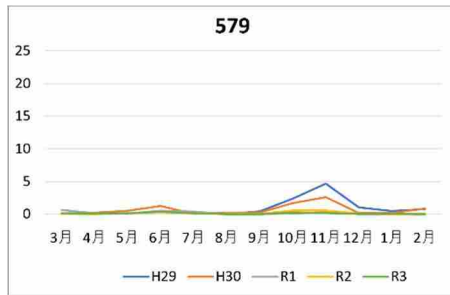
◆令和3年度 自動撮影カメラ調査



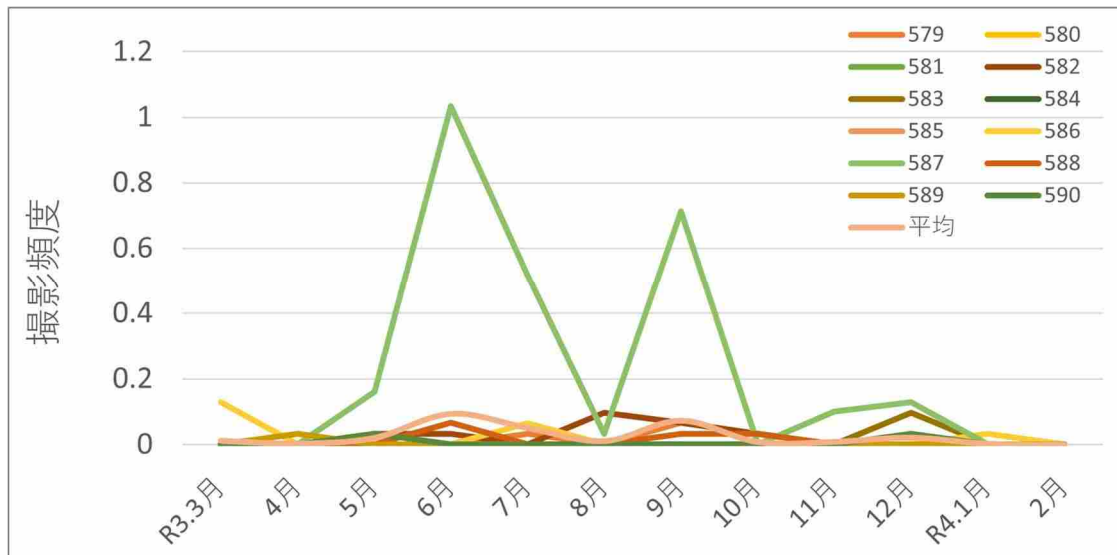
自動撮影カメラの設置位置 (12台)



シカの撮影頻度の年変化

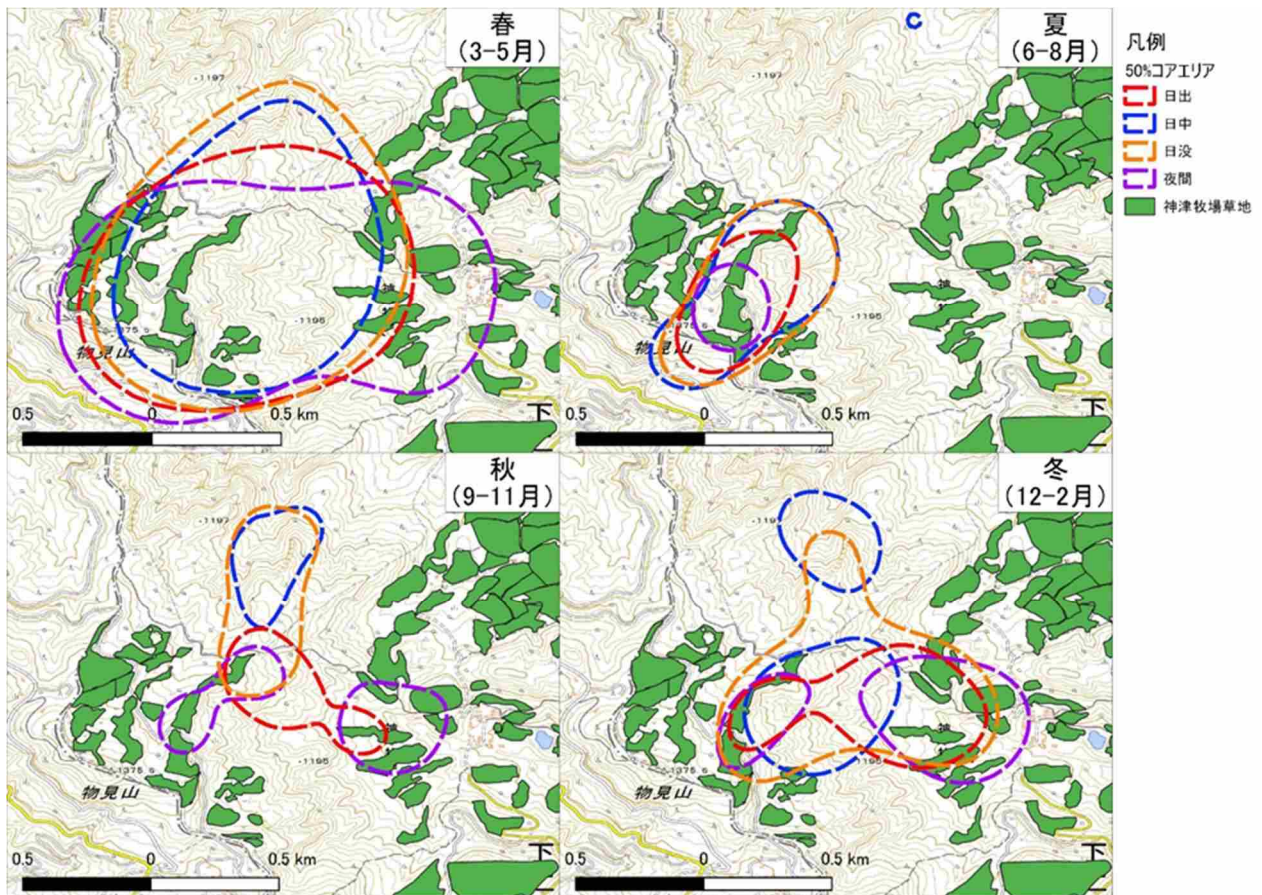


シカの撮影頻度の月別変化

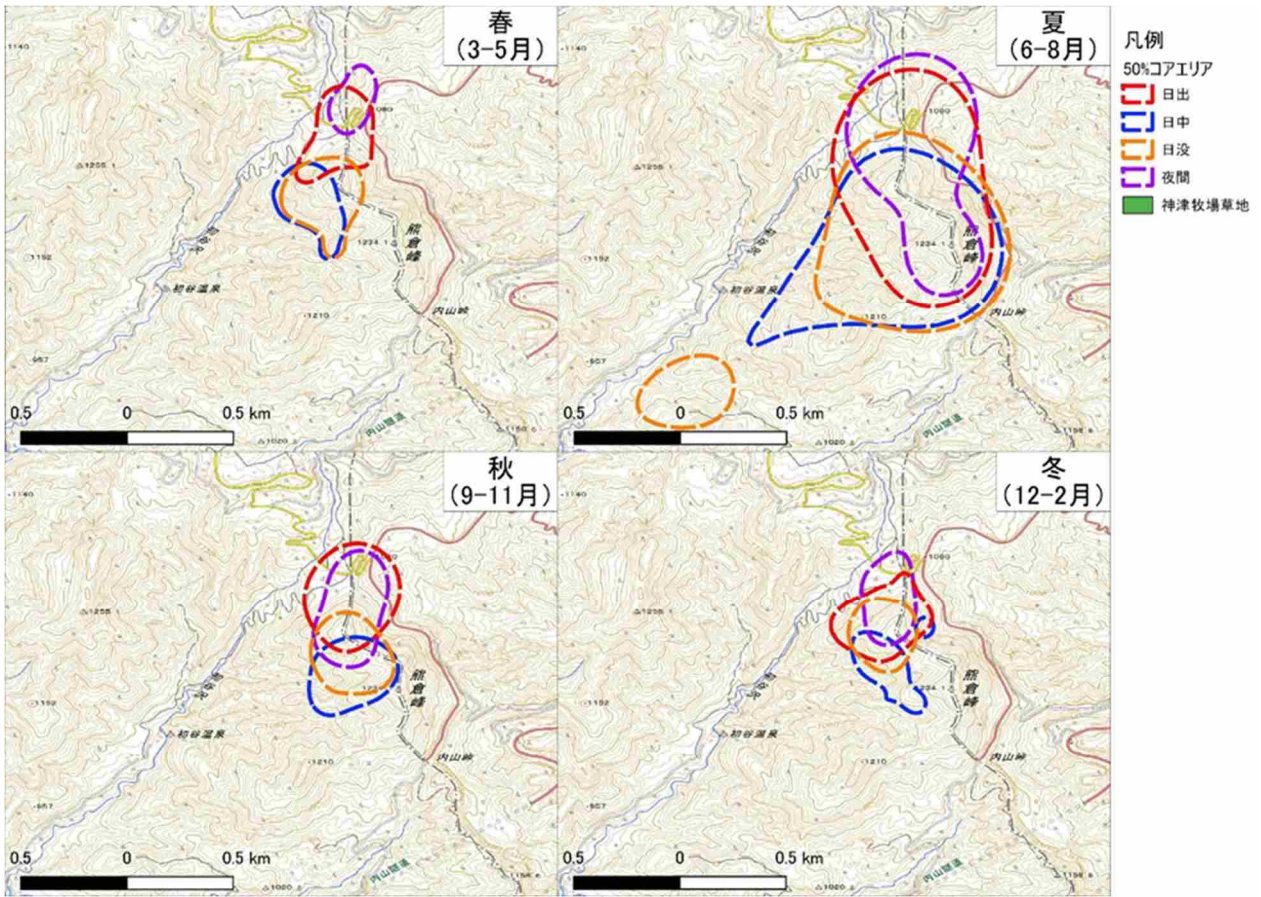


イノシシの撮影頻度の月別変化

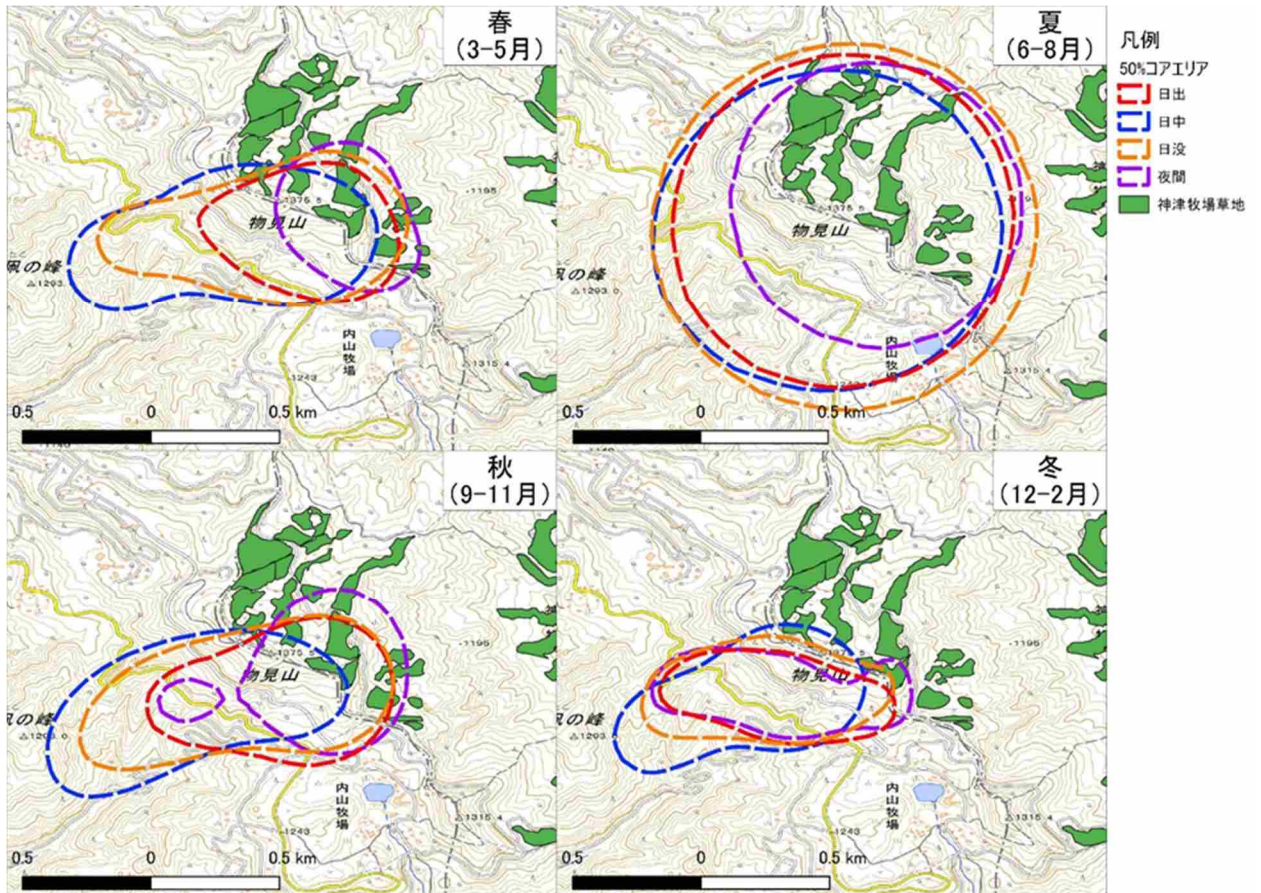
◆令和3年度 GPS 行動追跡調査



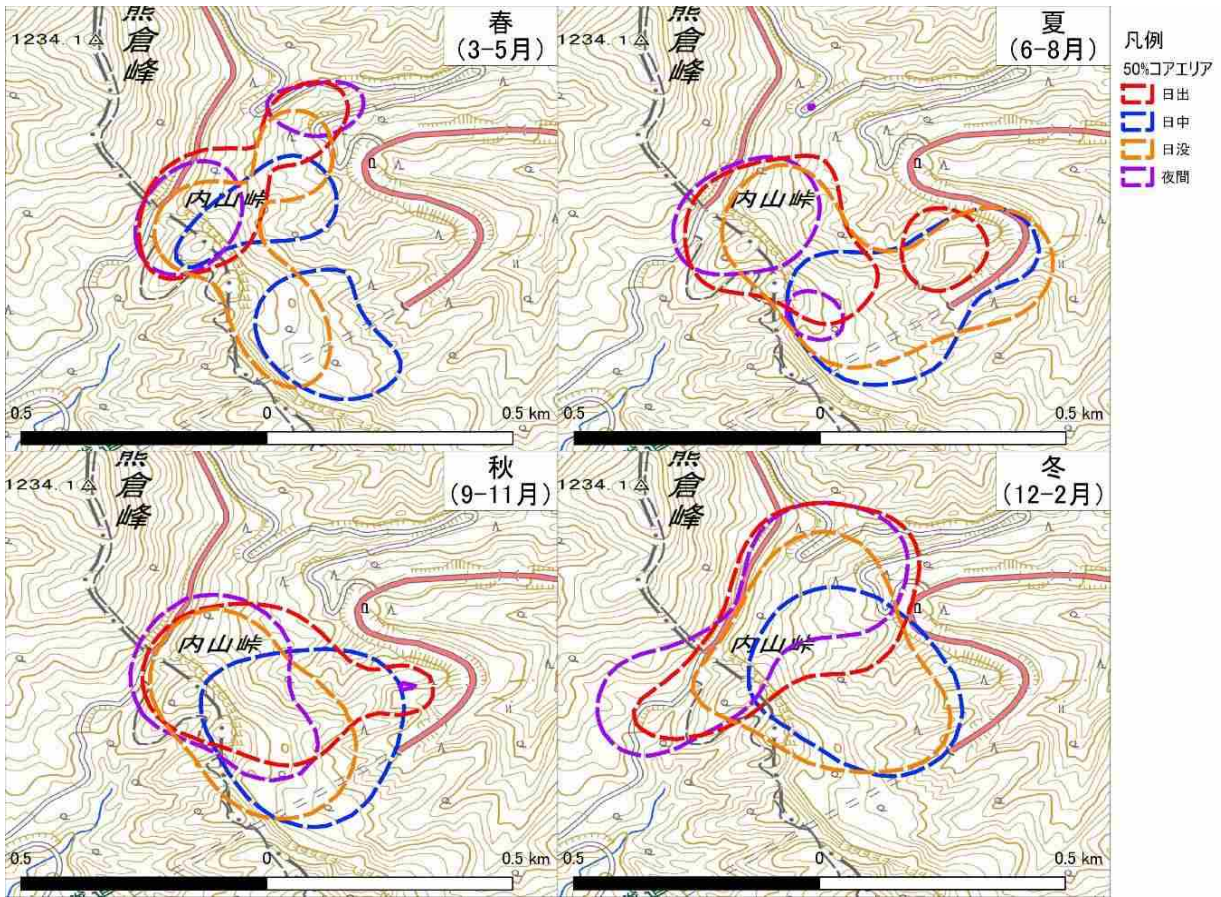
個体 2001 の行動圏 (コアエリア)



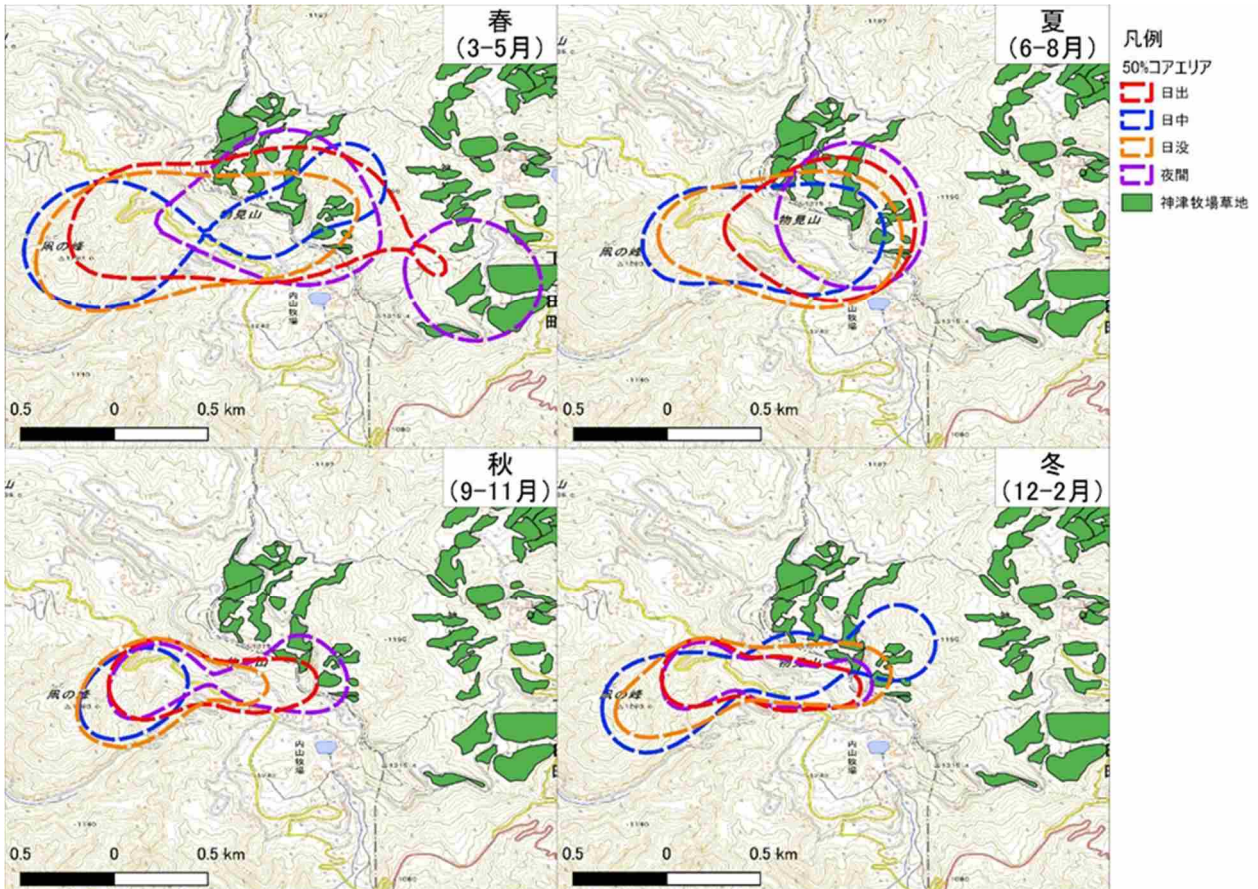
個体 2002 の行動圏 (コアエリア)



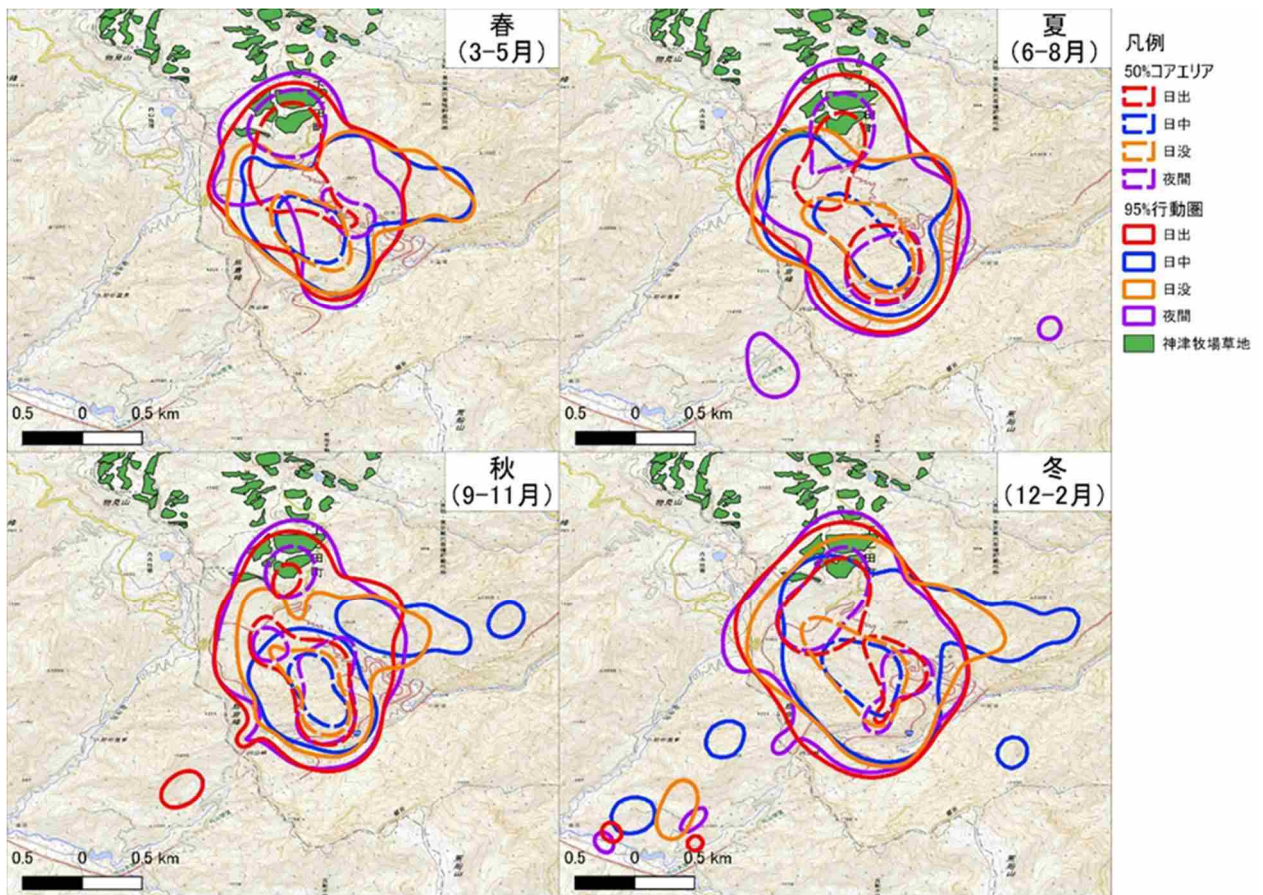
個体 2003 の行動圏 (コアエリア)



個体 2004 の行動圏 (コアエリア)

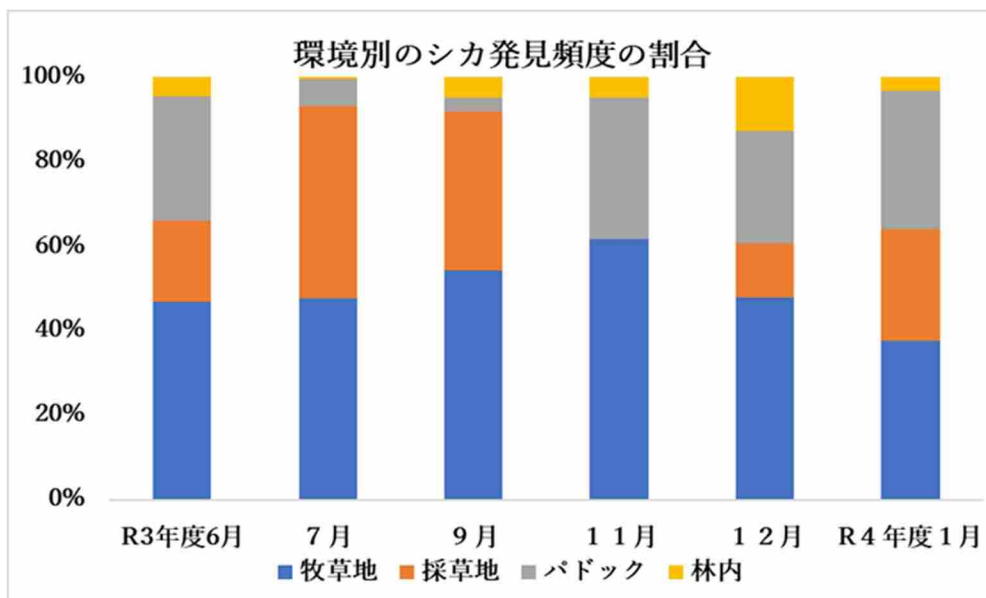


個体 2005 の行動圏 (コアエリア)

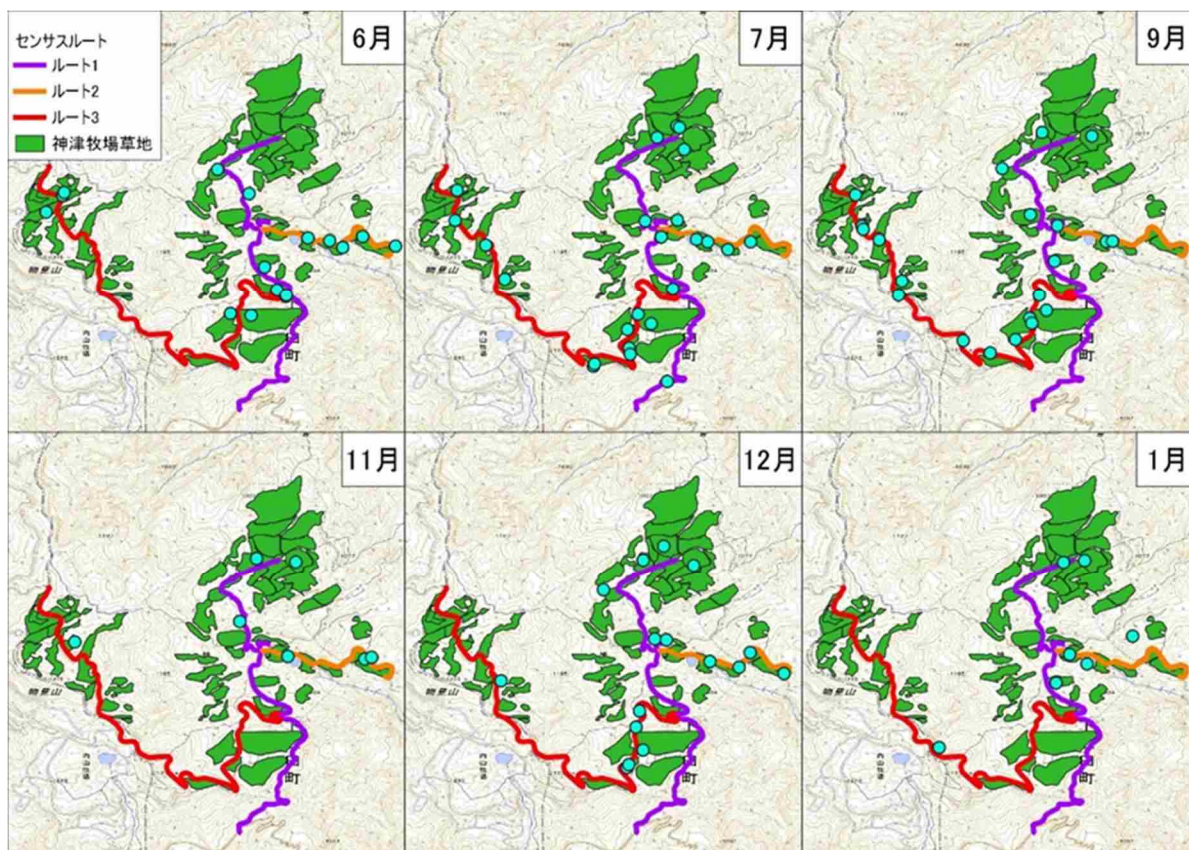


個体 2006 の行動圏 (コアエリア)

◆令和3年度 ライトセンサス調査

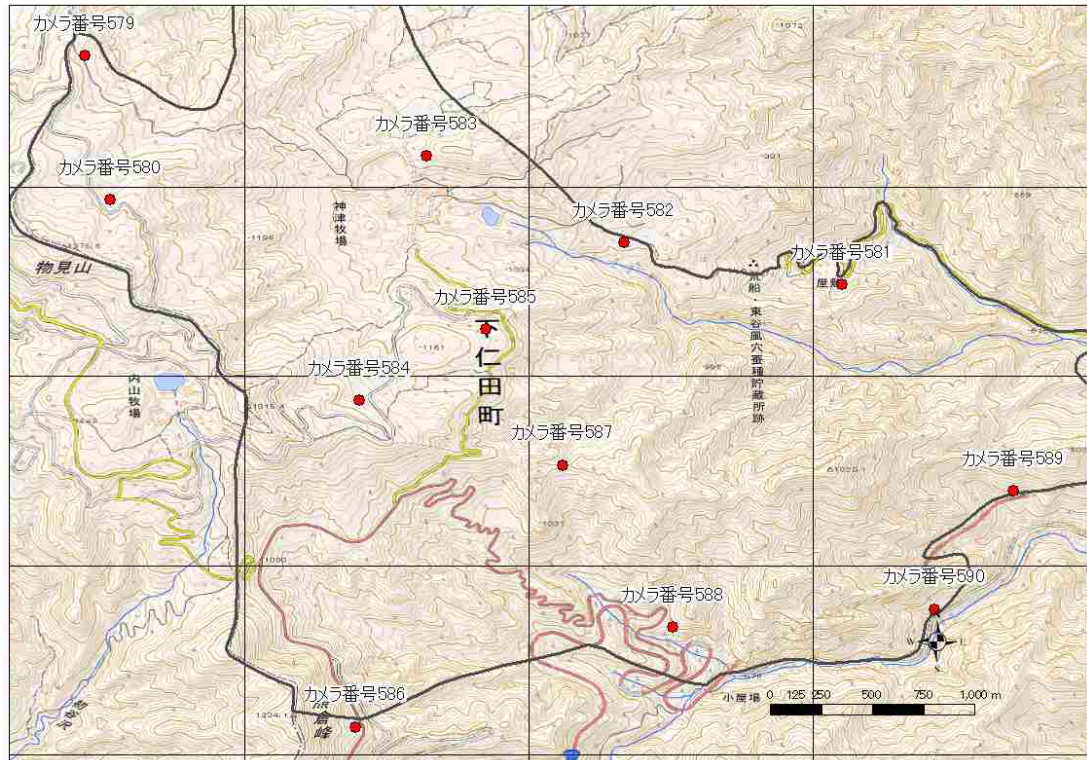


環境別のシカ発見頻度の割合

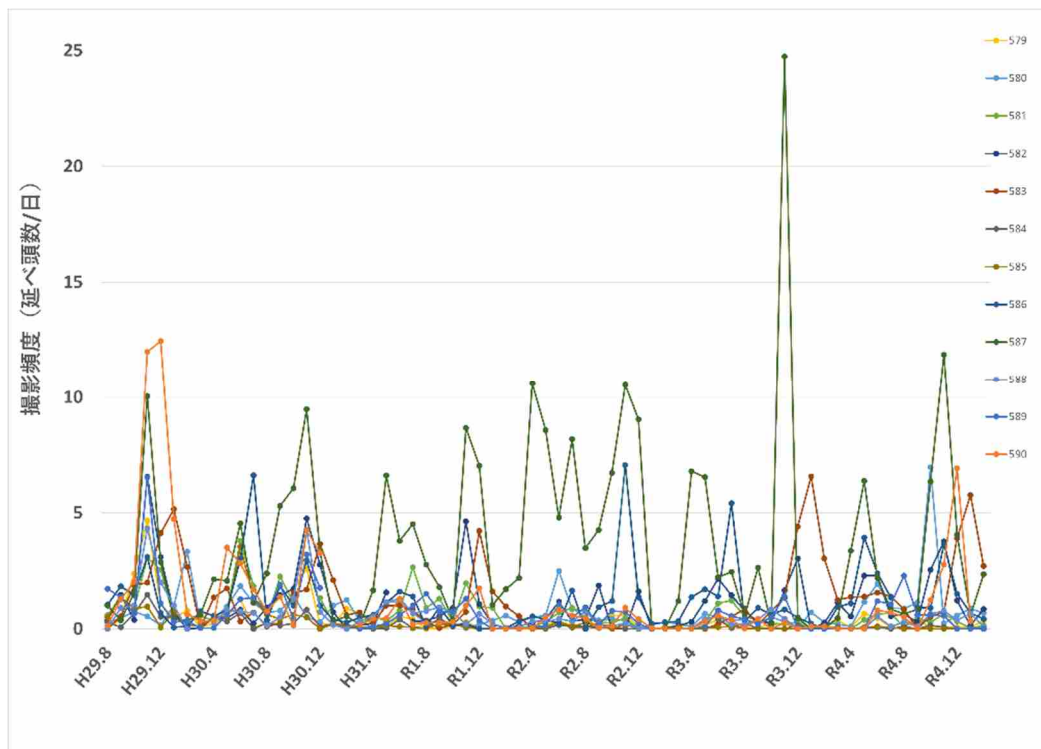


ライトセンサスでのシカ発見地点

◆令和4年度 自動撮影カメラ調査

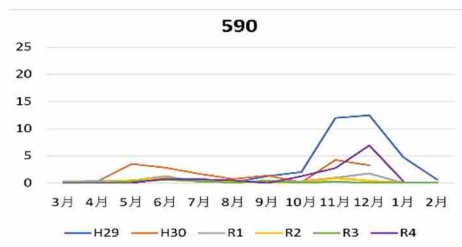
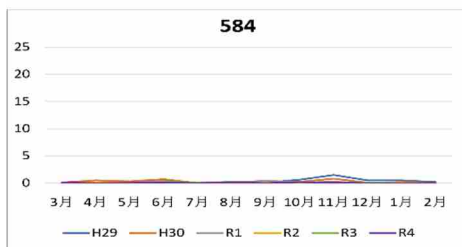
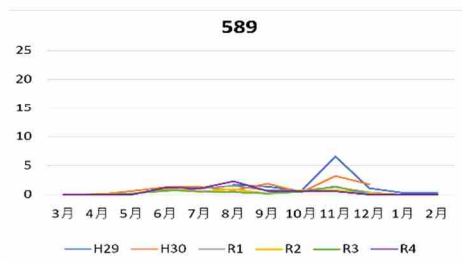
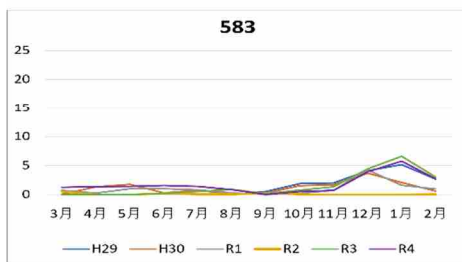
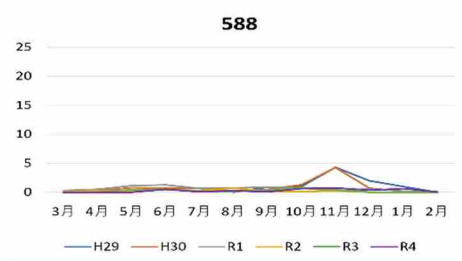
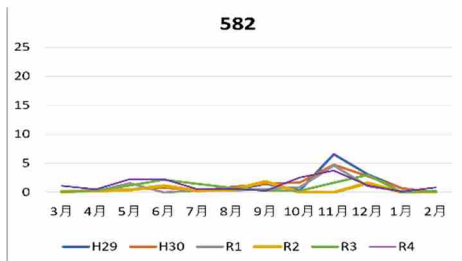
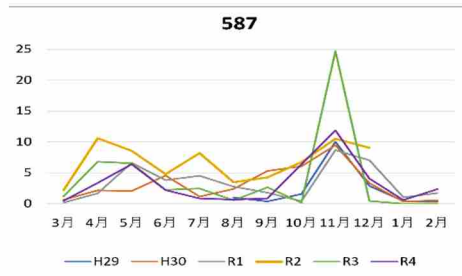
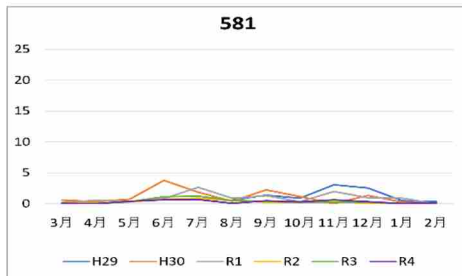
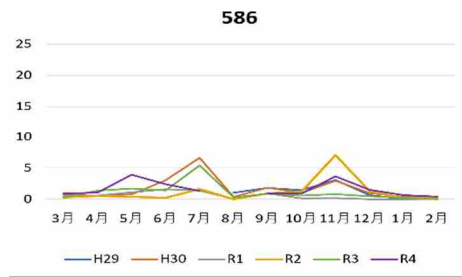
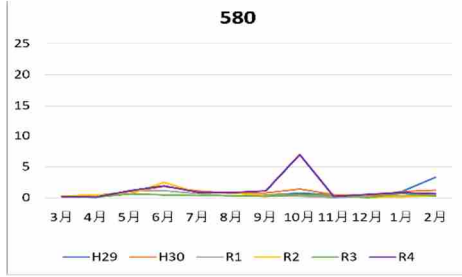
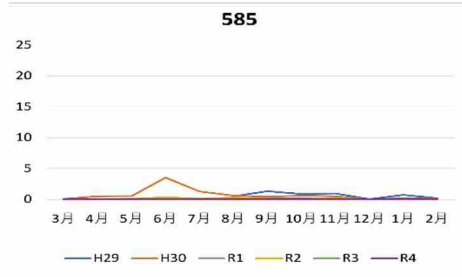
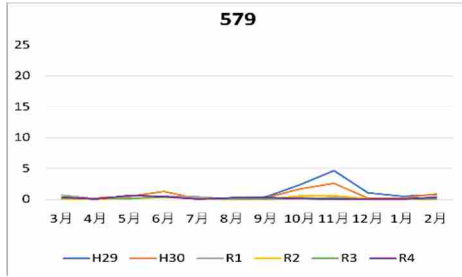


自動撮影カメラの設置位置 (12台)

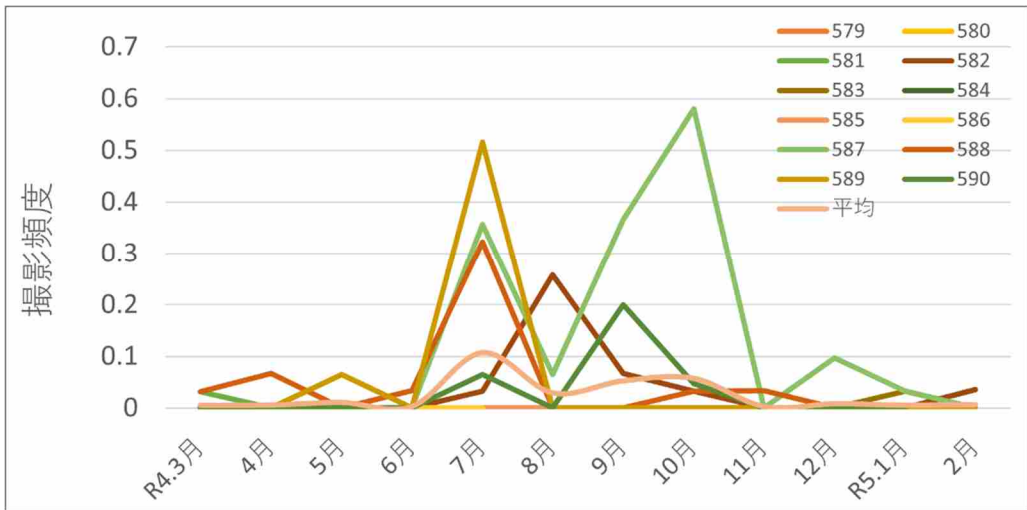


シカの撮影頻度の年変化





シカの撮影頻度の月別変化



イノシシの撮影頻度の月別変化