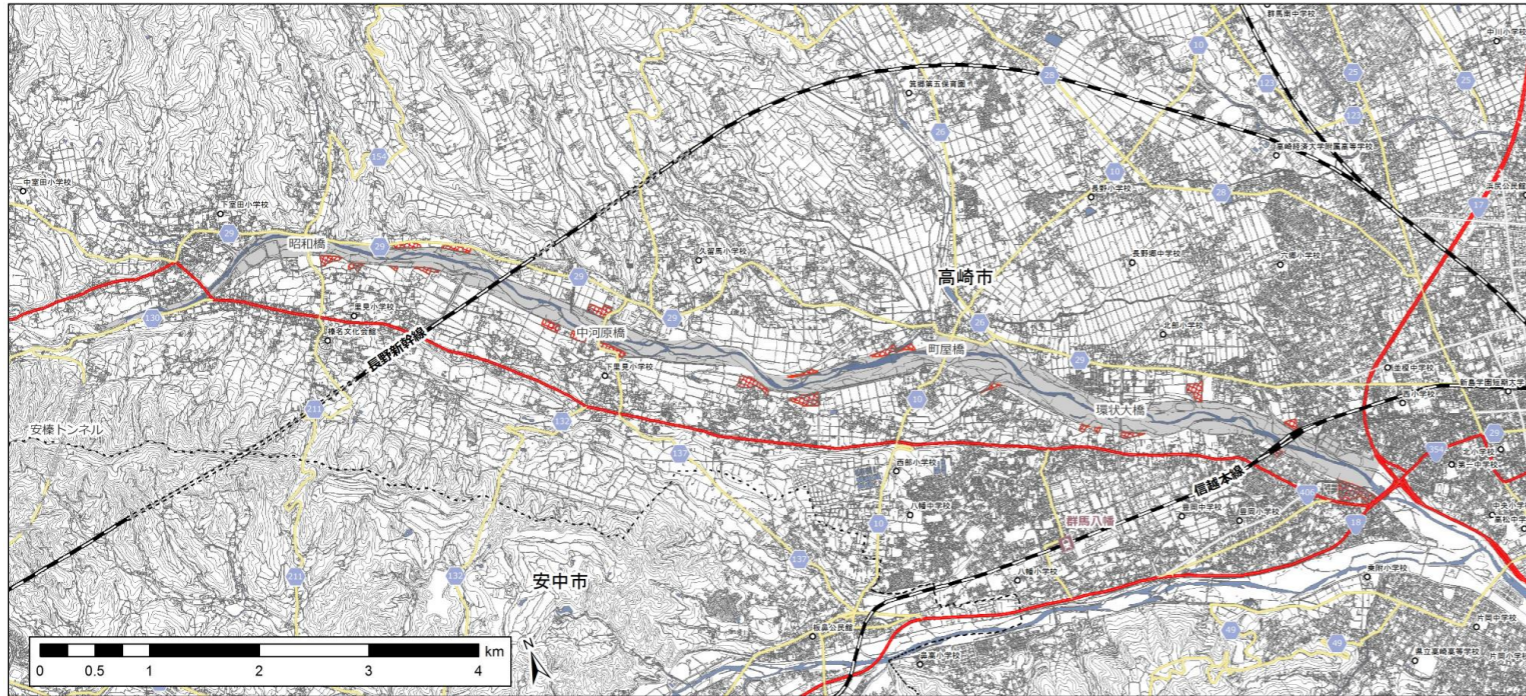


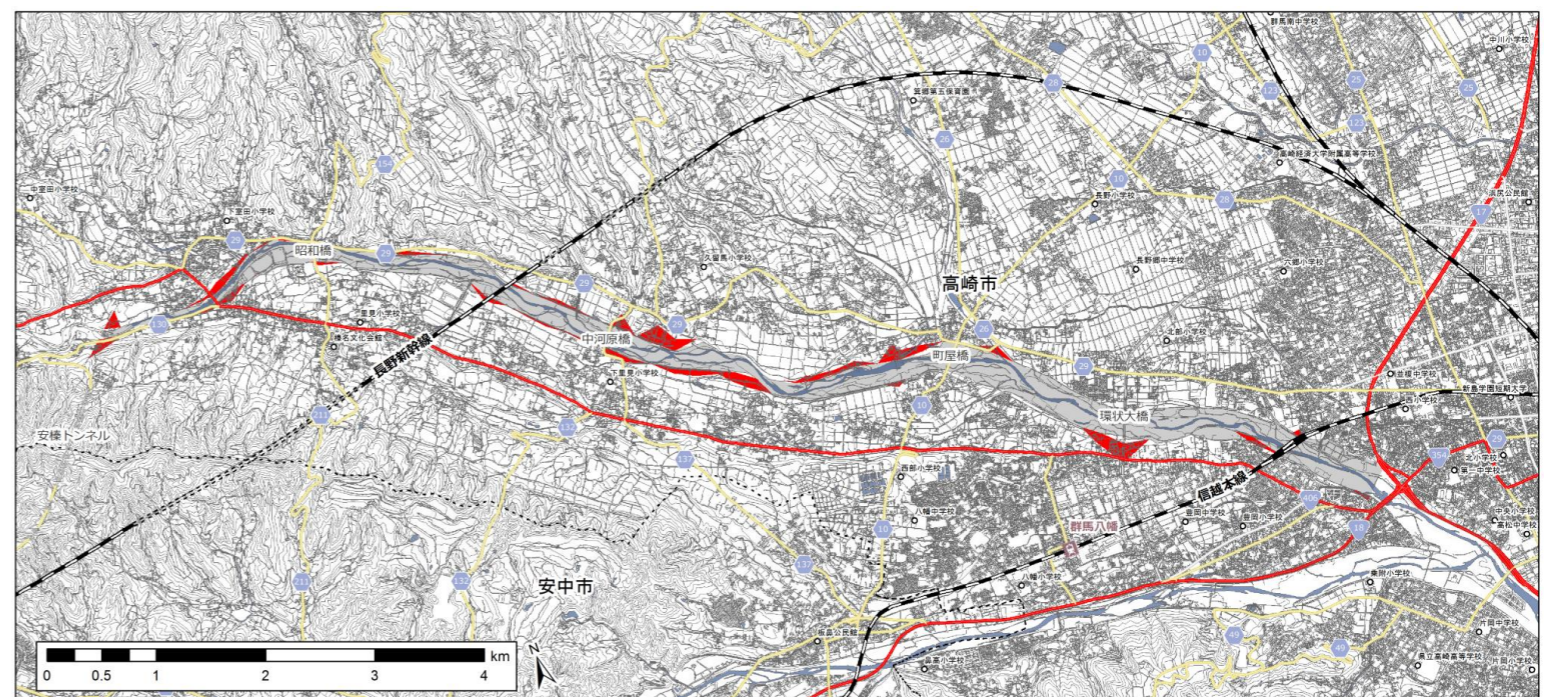
現況と課題

◆ 烏川（県管理）の大規模氾濫時に想定される状況 [家屋倒壊等氾濫想定区域]

烏川



[氾濫流]

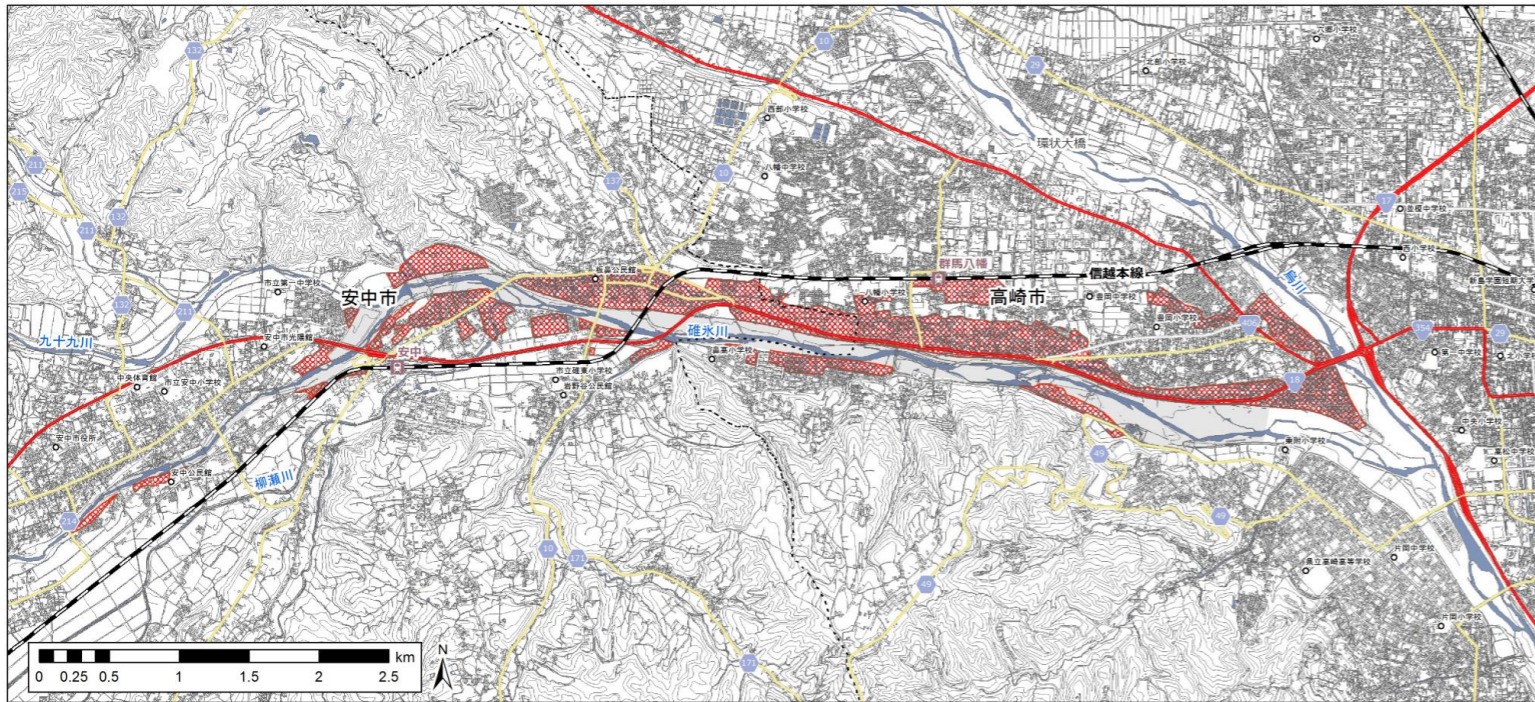


14  
[河岸侵食]

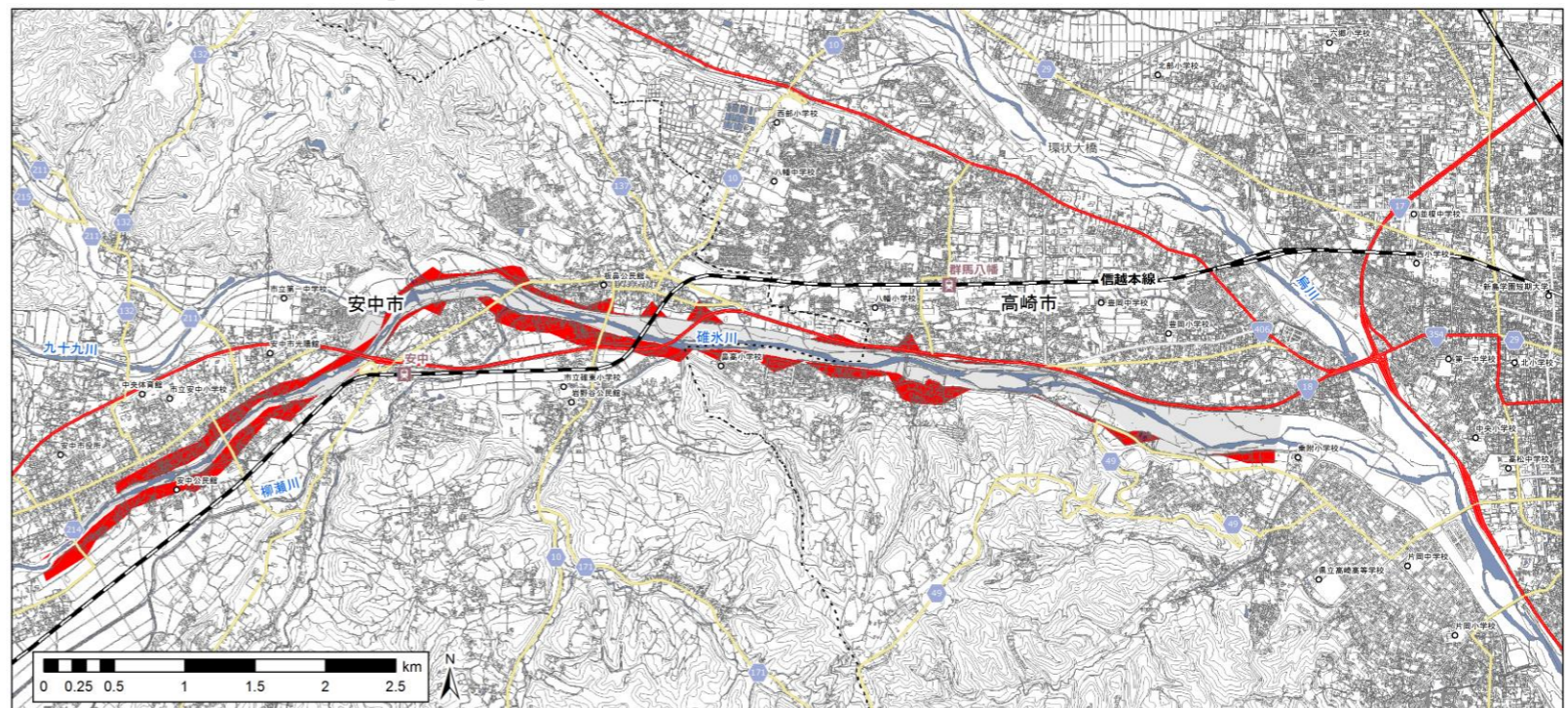
現況と課題

◆碓氷川（県管理）の大規模氾濫時に想定される状況 [家屋倒壊等氾濫想定区域]

碓氷川



[氾濫流]

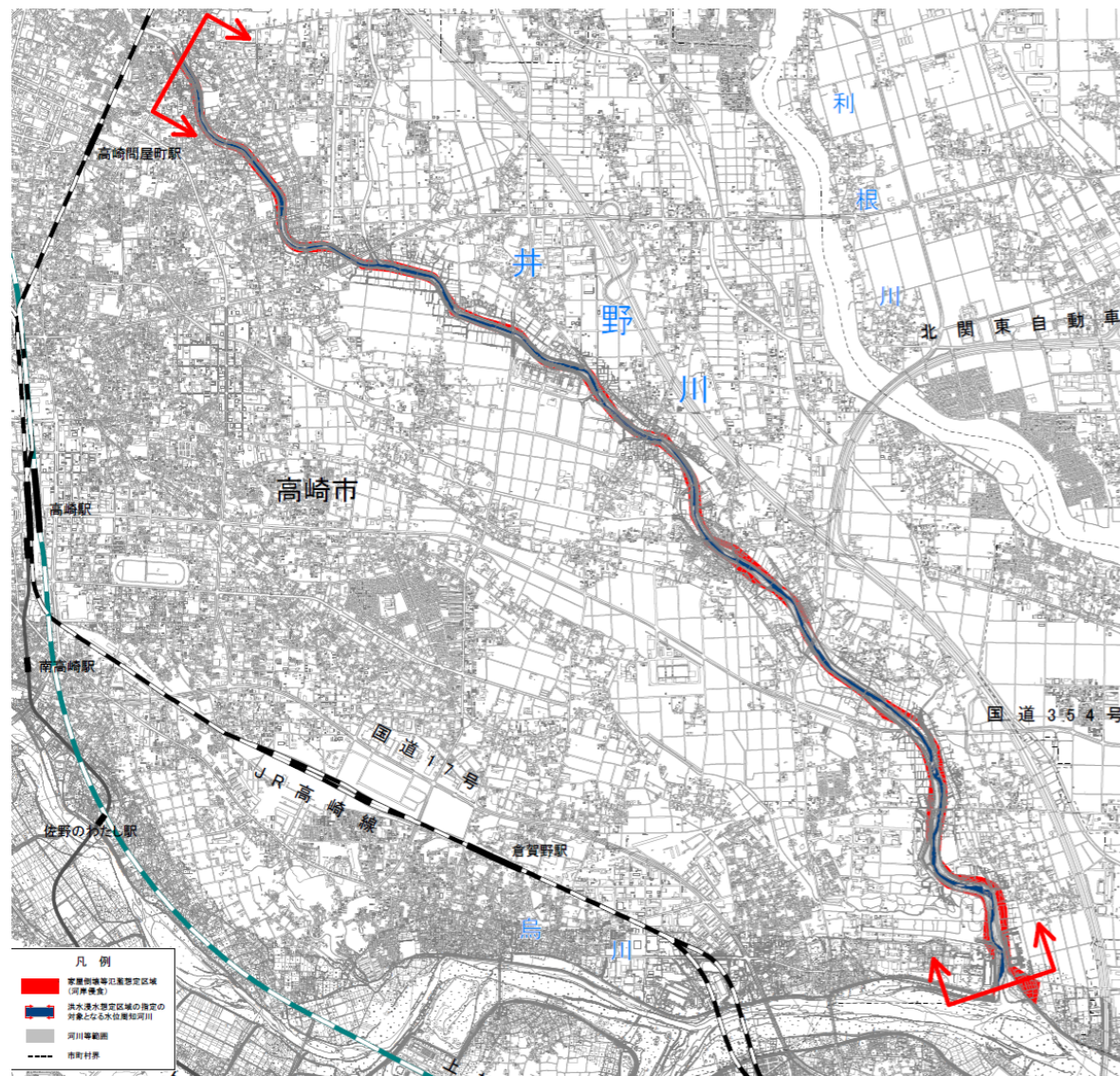


[河岸侵食]

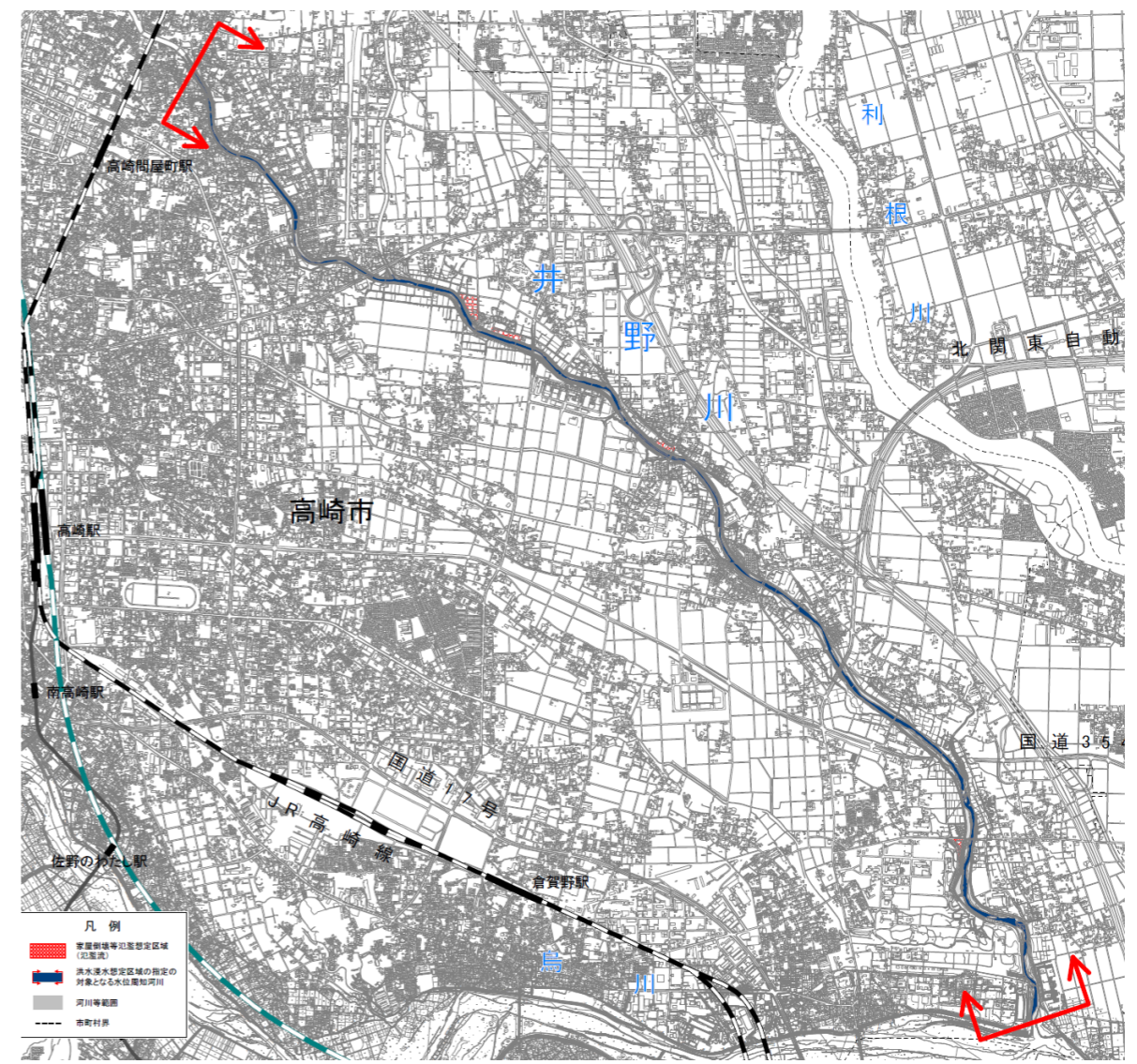
現況と課題

◆井野川の大規模氾濫時に想定される状況 [家屋倒壊等氾濫想定区域]

井野川



[氾濫流]

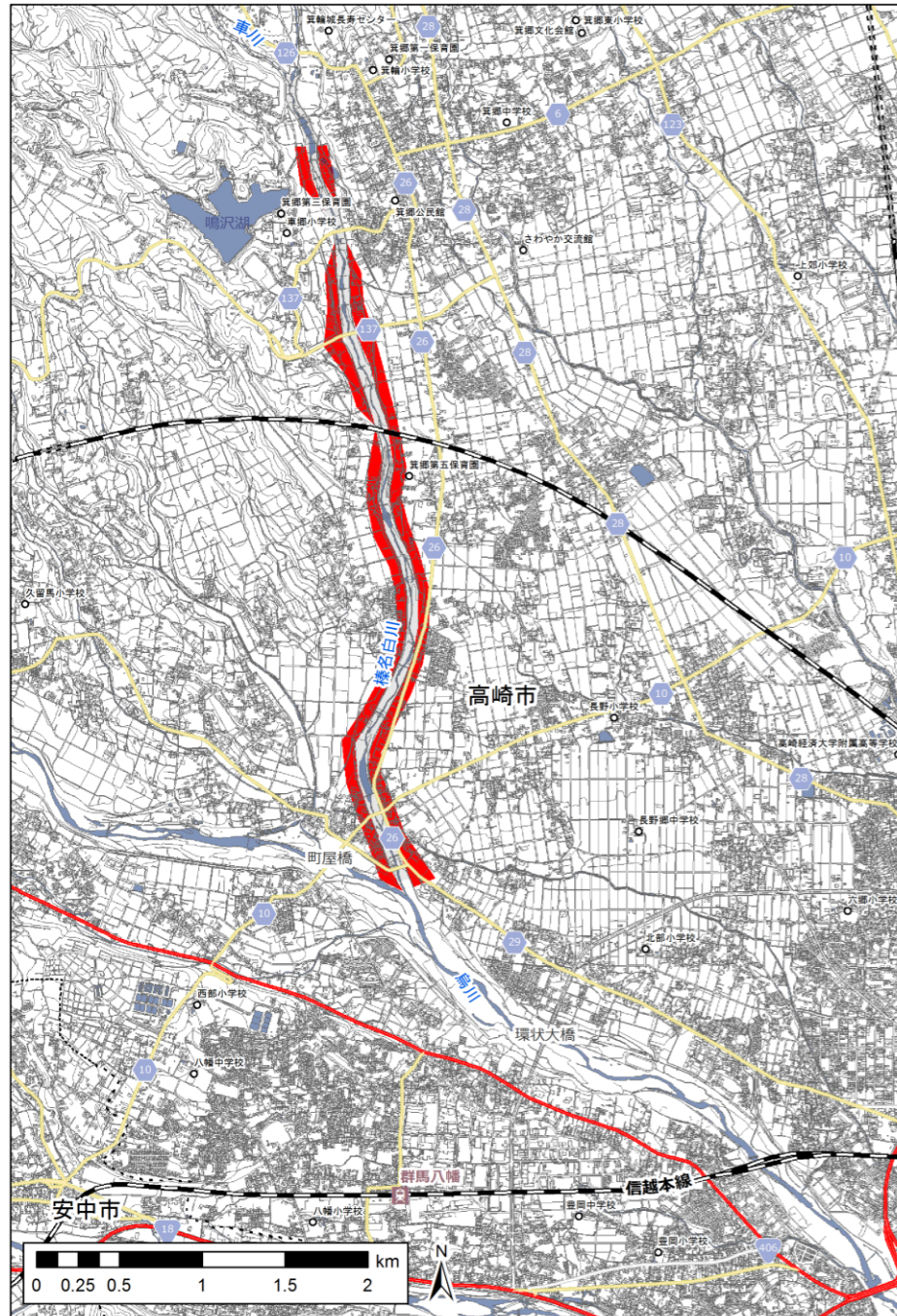


[河岸侵食]

現況と課題

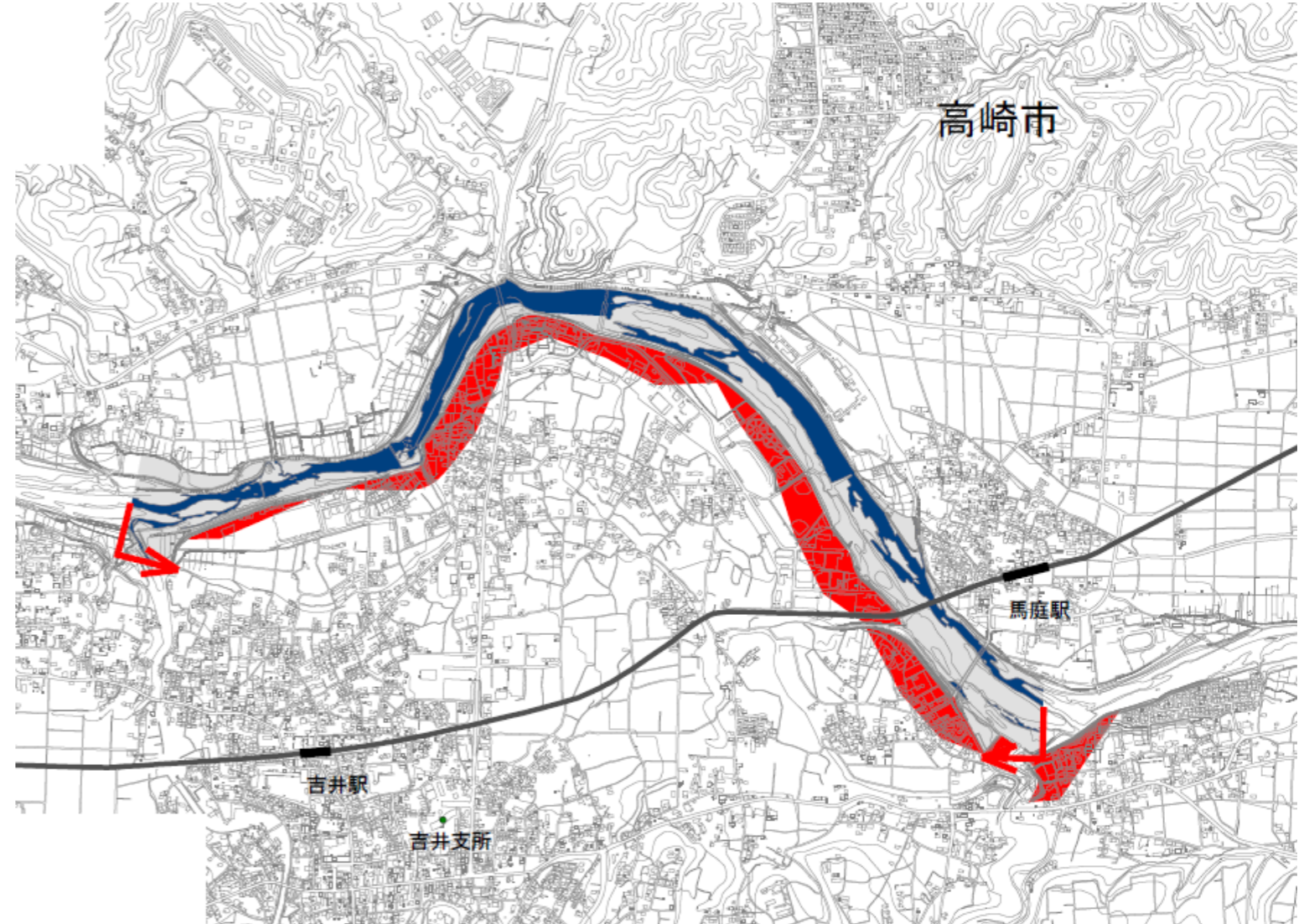
◆ 榛名白川・鍬川（県管理）の大規模氾濫時に想定される状況 [家屋倒壊等氾濫想定区域]

榛名白川



[河岸侵食]

鍬川



[河岸侵食]