

# **3<sup>rd</sup> dose of vaccination for COVID-19 will give you the right to enter a prize draw.**

**It's "The sooner the better."**

## Who is eligible?

- Someone who is 64 or younger (Born on or after Dec. 1, 1956)
- Residency registered in Gunma at the time of the 3<sup>rd</sup> shot



## Entry conditions

- Finished the 3<sup>rd</sup> shot by April 30, 2022
- Enter the draw via LINE app by May 31, 2022

## Here are the prizes you can win in the drawing.

(Sample prizes)



Diver's watch



Electrically assisted bicycle



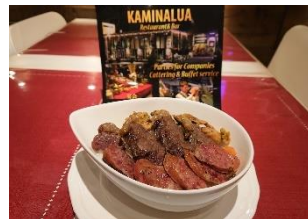
Leather cushion



Surgical mask



Box of Guaranas (350ml x 24 cans)



Churrasco bowls for two



JPY2,000 worth of Prestigio



All-you-can-eat Churrascos



One Brazilian pizza Size L



Restaurant Brazil's meal voucher for JPY2,000



Box of assorted cheeses

For more information on the 3<sup>rd</sup> dose side effects and the prize draw, visit the website of the prefectural government.



For the people who finish the 3<sup>rd</sup> dose of  
vaccination for COVID-19 earlier!

## How to Enter a Prize Draw

### 1. Regarding the Prize Draw





People who are 64 years old or younger ( born on or after December 1, 1956 ) and complete receiving their 3<sup>rd</sup> dose of the vaccination by April 30, 2022, are eligible to enter the prize draw.

◆ The Deadline for Your Entry . . . By 5 p.m. on May 31, 2022

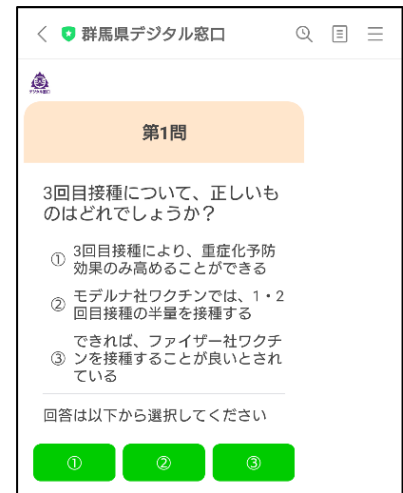


### 2. How to Enter a Prize Draw

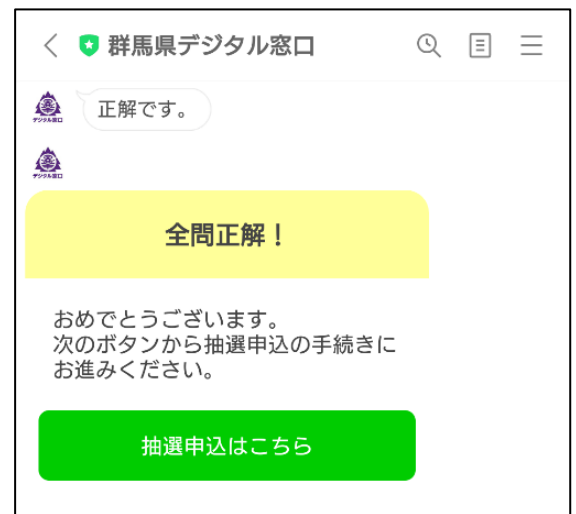
Complete your entry via LINE app as the following ① to ⑤ explain how.

<p>① Friend the Gunma Prefectural official account called “群馬県デジタル窓口 ( <i>Gunma-ken Digital Madoguchi</i> ).”</p>	
<p>② Select “3<sup>かいめ</sup>回目ワクチン<sup>ちゅうせんもうしこみ</sup>抽選申込 ( <i>Sankai-me Wakuchin Chusen Moushikomi</i> )” on the menu of “群馬県デジタル窓口 ( <i>Gunma-ken Digital Madoguchi</i> ).”</p>	

③ Answer the vaccine quizzes.



④ After answering all of the vaccine quizzes correctly, you can move onto the application page from the green bar.



⑤ Enter your name, address, the prize you want, etc., on the application page to complete your entry for the draw.



For more information on the 3<sup>rd</sup> dose side effects and the prize draw, visit the website of the prefectural government.

