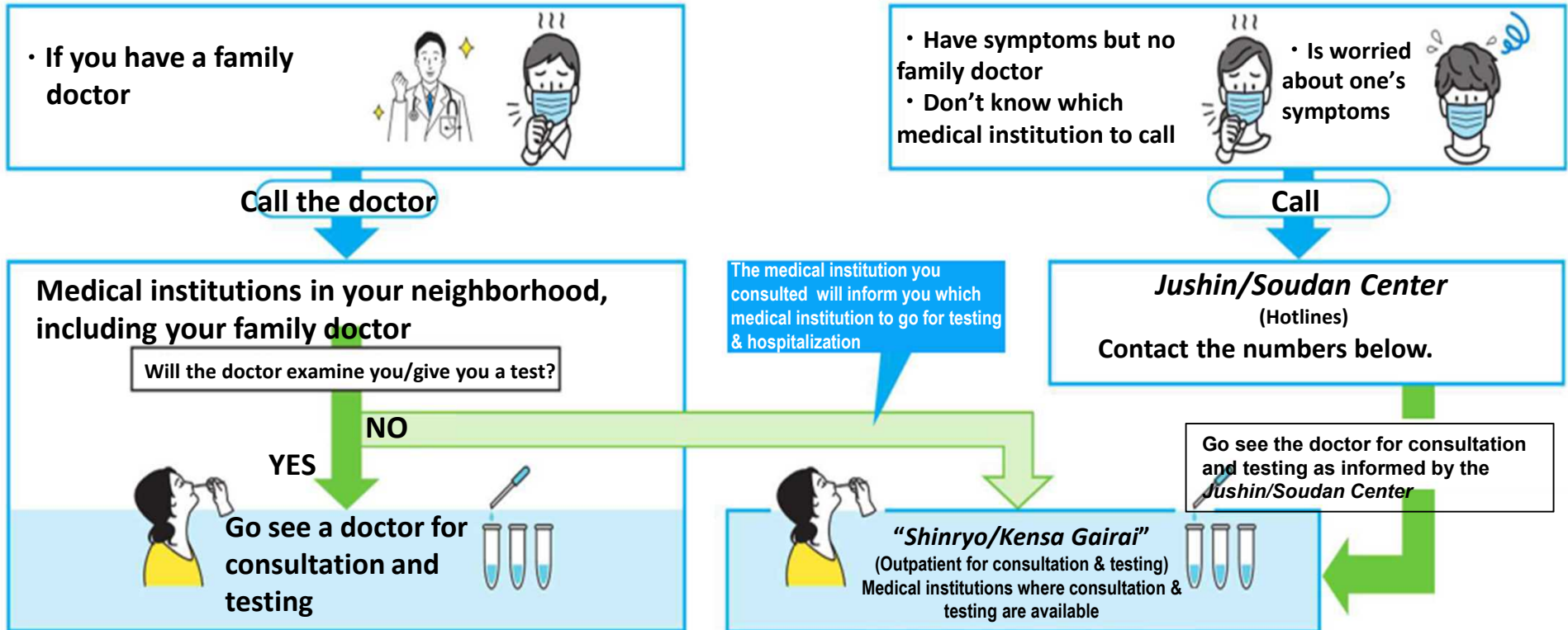


What to do when you think you might have COVID-19 because you have a fever along with other symptoms



Hotlines

Ken Jushin/Soudan Center	☎	0570 - 082 - 820	24/7
<i>(Prefectural Hotline)</i>			
Maebashi residents	☎	027 - 220 - 1151	
Takasaki residents	☎	027 - 381 - 6112	

Non-Japanese speakers, please call: 027 - 212 - 0010
(COVID-19 Hotline for Foreign Residents of Gunma)